

**Reliable, Trustable,
Responsible.**

Reliable

Reliable quality products

Trustable

We put our reputation

Responsible

What we promise what we do.

We believe, we can, we just do it.



**Economic and Eco-friendly
Safe and Efficient**



**UNIVERSAL ROLLER BRUSH
DEBURRING MACHINE**

LSP series is single or multi workpiece combined grinding machine.

sketch 1 The equipment can realize one-time deburring processing of metal plate laser cutting, shearing, stamping, and other machining.

sketch 2 It is suitable for metal plate surface pre grinding, hole, edge fillet deburring and surface drawing.

For coated sheet, galvanized sheet can be deburred without damage.



Suzhou Goodwill Machinery Equipment Co., Ltd.

Add: No. 21 Xiexin Road, New District, Suzhou City, Jiangsu Province, China.

Mobile/WhatsApp: +86-173 7273 9851

Tel: +86-0512-65580060

Email: info@goodwillme.cn

Web: www.goodwillme.cn



Goodwill focus on grinding technology,
One-stop solution for
your grinding requirement.

DEBURRING AND CHAMFERING MACHINES

LSP-SERIES

Universal rolling brush deburring surface drawing Chamfering



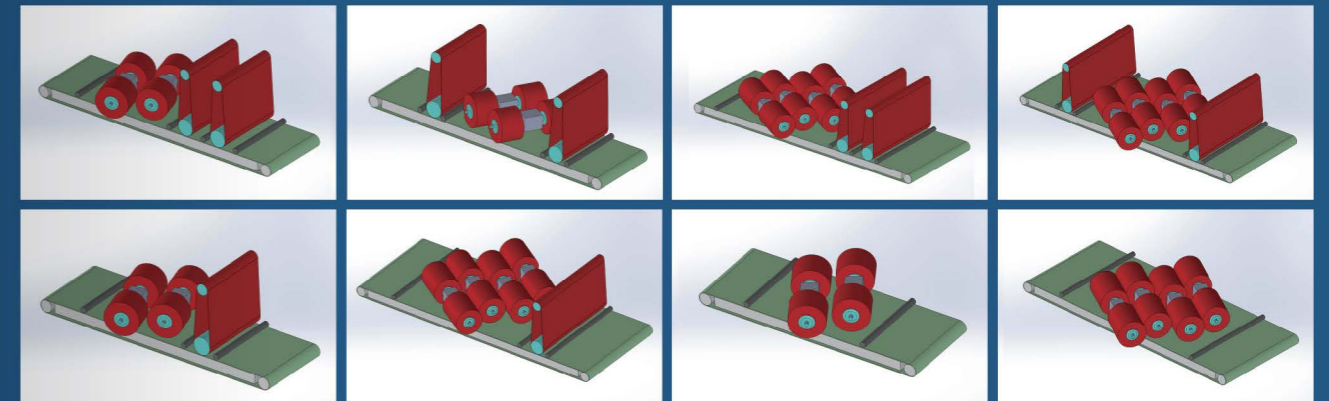
EQUIPMENT CONFIGURATION

- Processing width of equipment: 800mm、1000mm、1350mm、1600mm
- Processing thickness of equipment: 0.5–100 mm
- Feeding speed :0.5–8 m/min(variable frequency adjustable)
- Optional feeding mode
 1. Strong permanent magnet adsorption transport feed (suitable for carbon steel workpieces. Workpiece size $\geq 10 \text{ mm} \times 10 \text{ mm}$)
 2. Vacuum negative pressure adsorption conveying feeding (suitable for stainless steel plate, copper plate, aluminum plate, etc.) is not magnetically adsorbed. Workpiece size $\geq 50 \text{ mm} \times 50 \text{ mm}$)
- Four-column synchronous lifting, rolling brush position independent lifting, lifting servo control, accuracy 0.01 mm
- Machine NC PLC touch screen adjustment processing parameters
- Matching wet vacuum cleaner or industrial pulse vacuum cleaner to treat grinding dust to achieve environmental protection production



PRODUCT SCOPE OF APPLICATION

- Applicable scope of equipment: suitable for flat plate parts, carbon steel plate, stainless steel plate, aluminum plate, copper plate, titanium alloy, all kinds of non-ferrous metals, rubber and plastic materials
- Equipment function: pre-grinding, drawing, polishing, scratching, deburring, chamfering, etc. for laser cutting, shearing, punching, cutting, plasma cutting
- Equipment combination: wide abrasive belt + universal roller brush single or multiple combination structure



LSB-SERIES

Medium plate/slagging / deburring / chamfering



EQUIPMENT CONFIGURATION

- Equipment processing width :800 mm, 1000mm、1350mm、1600mm、2000mm、2200mm

- Equipment processing thickness : 1-100 mm

- Optional feeding mode

- Rubber roller+ rubber roller clip feeding

1. Conveyor belt+ rubber roller clip feeding (for ordinary workpieces. Workpiece length ≥ 150 mm



Strong permanent magnet adsorption conveying material for carbon steel workpieces. Workpiece size $\geq 10 \times 10$ mm

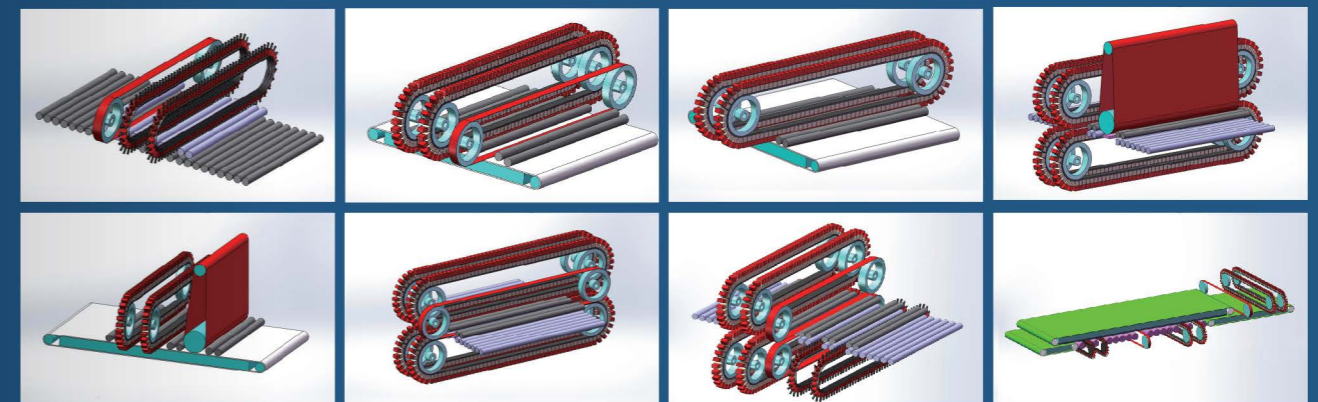
Vacuum negative pressure adsorption conveying feeding (for stainless steel plate, copper plate, aluminum plate, etc.) Is not magnetically adsorbed Workpiece size $\geq 50 \times 50$ mm

产品适用范围

LSB系列设备包含宽幅砂带/窄带砂带和磨料带单面或双面多工位组合磨削多功能机型。设备可以实现一次通过式加工单面或者双面全方位均匀去除金属板材激光切割、剪切下料、等离子切割、火焰切割、冲压下料、机加工等形成的熔渣毛刺等。适用于金属板材表面预磨，孔洞、棱边倒角去毛刺以及表面拉丝等加工工艺。

PRODUCT SCOPE OF APPLICATION

LSB series includes wide/narrow sand belt and abrasive belt (single or double-sided multi-station combined grinding multi-function). The equipment can realize the uniform removal of slag burr formed by laser cutting, shearing cutting, plasma cutting, flame cutting, stamping cutting, machining and so on. Suitable for sheet metal surface pre-grinding, hole, edge corner deburring and surface drawing process.



LSD-SERIES

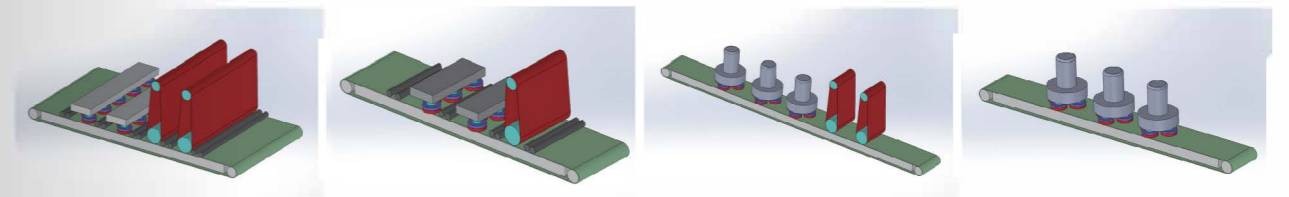
Fine blanking parts / wet deburring / chamfering



PROCESSING WIDTH OF EQUIPMENT

- Processing width of equipment :300 mm, 400mm \ 650mm \ 1050mm \ 1350mm

1. 300 mm width machine consists of three planetary arrangement brushes, single brush autorotates and the whole brush combination revolves
2. 400mm width machine consists of four planetary arrangement brushes, single brush autorotates and the whole brush combination revolves
3. 650 mm width machine consists of five interlaced disk brushes, two adjacent disk brushes are rotated forward and backward, and the whole disk brush combination swings horizontally in the vertical direction of the feed
4. 1050mm width machine consists seven interlaced disk brushes, two adjacent disk brushes are rotated forward and backward, and the whole disk brush combination swings horizontally in the vertical direction of the feed
5. 1350mm width machine is composed of nine interlaced disk brushes, two adjacent disk brushes are rotated forward and backward, and the whole disk brush combination swings horizontally in the vertical direction of the feed



PRODUCT SCOPE OF APPLICATION

- Application scope of equipment: suitable for precision stamping parts, gear parts, auto parts, powder metallurgy parts, machine-added workpiece products, etc
- Equipment function: the workpiece edge, hole deburring treatment, so that the workpiece surface consistent, all edge holes to achieve a uniform R arc
- Equipment combination: single or multiple combination structures of abrasive belt grinding station + disk brush grinding station

TECHNICAL PARAMETER

设备加工厚度 Processing thickness	砂带线速度 Belt linear speed	盘刷自转速度 Brush speed	盘刷公转速度 disk brush rotation speed	盘刷组合摆动频率 brush combined swing frequency	输送送料速度 Feed speed
1-100mm	18m/s (可选变频调速)	3000r/min (可选变频调速)	150r/min (可选变频调速)	120-280次/min (可选变频可调)	0.5-6m/min (变频可调)

OPTIONAL FEEDING:

1. Conveyor belt+ rubber roller clip feeding (for ordinary workpieces. Workpiece length \leq 480 mm)
2. Strong permanent magnet adsorption conveying material for carbon steel workpieces. Workpiece size \leq 10 mm x 10 mm)
3. Vacuum negative pressure adsorption conveying feeding (for stainless steel plate, copper plate, aluminum plate, etc.) Is not magnetically adsorbed Workpiece size \leq 50 mm x 50 mm)
 - Four-column synchronous lifting, lifting height digital setting and reading, unit: mm
 - The equipment is supplied with grinding fluid by sprinkler pipes at each station. The magnetic adsorption outlet is equipped with demagnetizing device to demagnetize the workpiece
 - Automatic paper tape filter is used to filter grinding dust to provide grinding cycle grinding fluid to achieve environmental protection production
 - Advantages of wet processing
 - The service life of wet processing consumables is longer

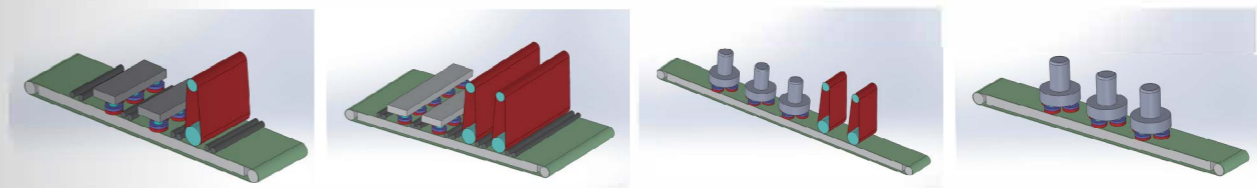
LSD-SERIES

Dry deburring / drawing / polishing / chamfering



PROCESSING WIDTH OF EQUIPMENT

1. 300 mm width machine consists of three planetary arrangement brushes, one of which rotates and the whole brush is rotated
2. 400 mm width machine consists of four planetary arrangement brushes, a single disk brush rotates, and the whole disk brush group rotates
3. 650 mm width machine consists of 5 interlaced disk brushes, two adjacent disk brushes are rotated forward and backward, and the whole disk brush combination swings horizontally in the vertical direction of the feed
4. 1050mm width machine is composed of seven interlaced disk brushes, two adjacent disk brushes are rotated forward and backward, and the whole disk brush combination swings horizontally in the vertical direction of the feed
5. 1350 mm width machine is composed of nine interlaced disk brushes, two adjacent disk brushes are rotated forward and backward, and the whole disk brush combination swings horizontally in the vertical direction of the feed



PRODUCT SCOPE OF APPLICATION

Application scope of equipment: suitable for precision stamping parts, gear parts, auto parts, powder metallurgy parts, machine-added workpiece products, etc

Equipment function: the workpiece edge, hole deburring treatment, so that the workpiece surface consistent, all edge holes to achieve a uniform R arc

Equipment combination: single or multiple combination structures of abrasive belt grinding station + disk brush grinding station

TECHNICAL PARAMETER

设备加工厚度 Processing thickness	砂带线速度 Belt linear speed	盘刷自转速度 Brush speed	盘刷公转速度 Disk brush rotation speed	盘刷组合摆动频率 Brush combination swing frequency	输送送料速度 Feed speed
1-100mm	18m/s (可选变频调速)	3000r/min (可选变频调速)	150r/min (可选变频调速)	120-280次/min (可选变频可调)	0.5-6m/min (变频可调)

OPTIONAL FEEDING:

1. Conveyor belt+ rubber roller clip feeding (for ordinary workpieces. Workpiece length 480 mm)
2. Strong permanent magnet adsorption conveying material for carbon steel workpieces. Workpiece size 10 mm x 10 mm
3. Vacuum negative pressure adsorption conveying feeding (for stainless steel plate, copper plate, aluminum plate, etc. Is not magnetically adsorbed Workpiece size \geq 50 mm x 50 mm)
 - Four-column synchronous lifting, lifting height digital setting and reading, unit: mm
 - The equipment is supplied with grinding fluid by sprinkler pipes at each station. The magnetic adsorption outlet is equipped with demagnetizing device to demagnetize the workpiece
 - Automatic paper tape filter is used to filter grinding dust to provide grinding cycle grinding fluid to achieve environmental protection production

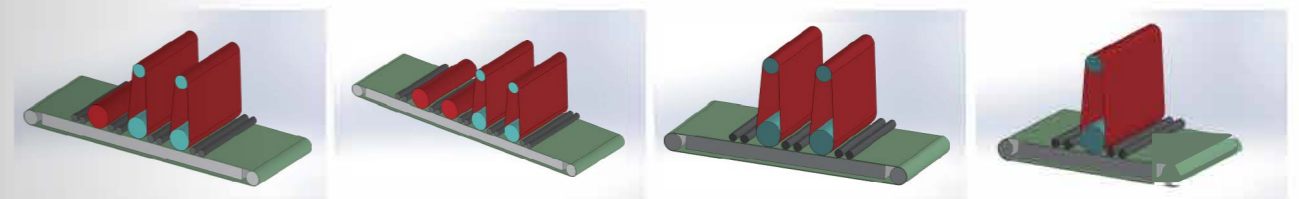
LSG-SERIES

Wet deburring / drawing / polishing



OPTIONAL FEEDING:

1. Conveyor belt + rubber roller clip feeding (for ordinary workpieces. Length of work piece ≥ 280 mm)
2. Strong permanent magnet adsorption conveying material for carbon steel workpieces. Workpiece size ≥ 10 mm \times 10 mm
3. Vacuum negative pressure adsorption conveying feeding (for stainless steel plate, copper plate, aluminum plate, etc.) is not magnetically adsorbed. Workpiece size ≥ 50 mm \times 50 mm)
4. The rubber roller + the rubber roller are clamped to feed the material. Workpiece length ≥ 280 mm)



产品适用范围

- 设备适用范围：适用于平面板类零件，碳钢板、不锈钢板、铝板、铜板、钛合金、各类有色金属、橡塑材料、大理石等。
- 设备功能：适用于各类平面板类零件表面拉丝、抛光、去划伤、去除纵向毛刺、去氧化皮、拉毛、定厚等加工等。
- 设备组合：砂带+抛光轮单个或者多个组合结构

PRODUCT SCOPE OF APPLICATION

- Applicable scope of equipment: suitable for flat plate parts, carbon steel plate, stainless steel plate, aluminum plate, copper plate, titanium alloy, all kinds of non-ferrous metals, rubber and plastic materials, marble and so on.
- Equipment function: suitable for all kinds of flat plate parts surface drawing, polishing, scratch removal, removal of longitudinal burr, oxidation skin, hair, fixed thickness and other processing.
- Equipment combination: single or multiple combination structure of sand belt + polishing wheel

技术参数 / TECHNICAL PARAMETER

设备加工厚度 Processing thickness of equipment	砂带线速度 Belt linear speed	抛光轮线速度 Polishing wheel line speed	输送送料速度 Feeding speed
1-80mm	18m/s (可选变频调速)	20m/s (可选变频调速)	2-11m/min (变频可调)

设备配置 / EQUIPMENT CONFIGURATION

- 设备加工宽度：350mm、650mm、800mm、1050mm、1350mm、1600mm、1900mm、2200mm
- 四柱式同步升降，升降高度数字化设置和读数，单位mm
- 设备每个工位前后配喷淋水管提供磨削液，进出口配阻水辊防止磨削液飞溅，出口配上下风刀切水干燥，配三组挤水辊挤水。
- 配套自动纸带过滤器过滤磨削粉尘提供研磨循环磨削液，实现环保化生产。
- 湿式加工的优点：
 - 1、湿式加工工件冷态加工不易受热变形；
 - 2、湿式加工工件表面粗糙度更好；
 - 3、湿式加工磨削粉尘全部吸收，工作环境更好；
- 湿式加工耗材使用寿命更长。
- Width of equipment: 350mm、650mm、800mm、1050mm、1350mm、1600mm、1900mm、2200mm
- Four-column synchronous lifting, lifting height digital setting and reading, unit: mm
- The equipment is equipped with spray pipe to provide grinding fluid before and after each station, inlet and outlet water resistance roller to prevent grinding fluid spatter, outlet with upper and lower air knife cut water dry, with three groups of water extrusion roller water extrusion.
- Automatic paper tape filter is used to filter grinding dust to provide grinding cycle grinding fluid to achieve environmental protection production.
- Advantages of wet processing:
 1. Cold working of wet workpieces is not easily deformed by heat;
 2. Better surface roughness of wet workpieces;
 3. Wet grinding dust absorption, better working environment;
- The service life of wet processing consumables is longer.

LSG-SERIES

Dry deburring / drawing / polishing



EQUIPMENT CONFIGURATION

- Width of equipment: 350mm、650mm、800mm、1050mm、1350mm、1600mm、1900mm、2200mm
- Optional feeding mode
 1. Conveyor belt+ rubber roller clip feeding (for ordinary workpieces. Workpiece length ≥ 280 mm)
 2. Strong permanent magnet adsorption conveying material for carbon steel workpieces. Workpiece size ≥ 10 mm x 10 mm)
 3. Vacuum negative pressure adsorption conveying feeding (for stainless steel plate, copper plate, aluminum plate, etc.) Is not magnetically adsorbed Workpiece size ≥ 50 mm x 50 mm)
 4. The rubber roller+ the rubber roller are clamped to feed the material. Workpiece length ≥ 280 mm)
- Four-column synchronous lifting, lifting height digital setting and reading, unit: mm
- Equipped with wet vacuum cleaner or industrial pulse vacuum cleaner to treat grinding dust to achieve environmental protection production

产品适用范围

- 设备适用范围：适用于平板类零件，碳钢板、不锈钢板、铝板、铜板、钛合金、各类有色金属、橡塑材料、大理石、石墨等。
- 设备功能：适用于各类平板类零件表面拉丝、抛光、去划伤、去除纵向毛刺、去氧化皮、拉毛、定厚等加工等。
- 设备组合：砂带+抛光轮单个或者多个组合结构

PRODUCT SCOPE OF APPLICATION

- Application scope of equipment: suitable for flat plate parts, carbon steel plate, stainless steel plate, aluminum plate, copper plate, titanium alloy, all kinds of non-ferrous metals, rubber and plastic materials, marble, graphite, etc.
- Equipment function: suitable for all kinds of flat plate parts surface drawing, polishing, scratch removal, removal of longitudinal burr, oxidation skin, hair, fixed thickness and other processing.
- Equipment combination: single or multiple combination structure of sand belt + polishing wheel

技术参数 / TECHNICAL PARAMETER

设备加工厚度 Processing thickness of equipment	砂带线速度 Belt linear speed	抛光轮线速度 Polishing wheel line speed	输送送料速度 Feeding speed
1-80mm	18m/s (可选变频调速)	20m/s (可选变频调速)	2-11m/min (变频可调)

